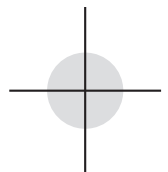
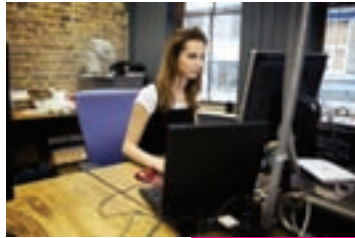
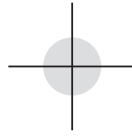


Canon

 imagePRESS® C1+



THE imagePRESS C1+ COLOR DIGITAL PRINTING SYSTEM – CRAFTSMANSHIP IN COLOR



The Canon imagePRESS C1+ color digital printing system is the first color device with clear toner for the light production and proofing market. Designers seeking the highest color expectations for digital proofing will immediately identify the visual difference with the Canon imagePRESS C1+ color digital printing system. Exceptional color with calibration tools for industry profiles showcase vivid, vibrant colors. This press is equipped with color management tools to work with industry standards to realize vivid, vibrant, true-to-production prints.

Whether creating logos or designing ad campaigns, from concept to presentation, the imagePRESS C1+ color digital printing system provides a comprehensive proof that accurately and consistently extends your ability to communicate effectively and with impact.

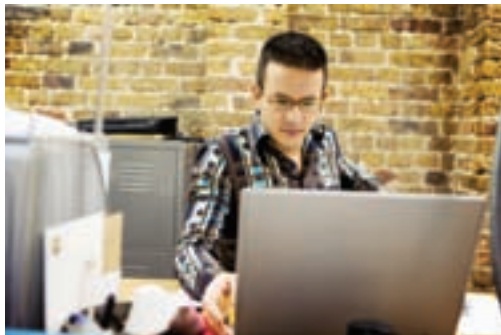
Based on the same architecture as the acclaimed Canon imagePRESS C1 digital print system, the imagePRESS C1+ color digital printing system continues to produce the highest quality color proofs, layouts, and graphic imagery—now with the added feature of clear toner to offer exciting new possibilities for design. Clear toner lets you add visual “texture” to any layout.

The imagePRESS C1+ color digital printing system is perfect for graphic artists and creative services professionals looking for a cost-effective way to add value and introduce new features to their designs. Additionally, the imagePRESS C1+ color digital printing system is suited for corporate environments wanting to add a watermark design to their documents which can be printed with clear toner.



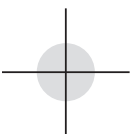


The imagePRESS C1+ color digital printing system's large color gamut and smooth toner coverage, together with its ease-of-use and low cost, allow for artists and designers to create ideas that preserve their craft and offer exciting new means to showcase their visual communication skills.



- **Remarkable image quality** at true 1200 x 1200 dpi resolution enables you to produce details that are crisp and clear. Solid and halftone colors are consistent from page to page.
- **Media versatility** with the Media Library manages a wide array of paper stocks that provides a tool for insuring that the substrate selection and the press are aligned to ensure the highest quality on the greatest variety of media.
- **Innovative digital color** can sustain industry tolerances and specifications. This press makes meeting the rigorous demands of graphic artists easier to reach while staying within your budget.

With printing speeds of up to 14 pages per minute (ppm) in color and up to 60 ppm in black and white, your color-critical design concepts can be printed with a complete color workflow, including industry-standard color management tools. The imagePRESS C1+ color digital printing system allows you to translate your concepts into full-color representations for your clients and their target audiences.





POWERFUL CREATIVE TOOLS

NEW DIMENSIONS IN CREATIVE POWER...CLEAR TONER

This amazing technology provides new visual texture treatments to the creative market. From subtle delicate suggestions to bold elements, these effects can impact your craft and your message to market. Your ideas are now able to transcend, representing ideas with colors and affecting the light texture of a concept.

You can also simulate traditional analog coating methods in the design and approval phases of your projects. Creating concepts that distinguish your craft will help set work apart so your clients can see the power behind your team to create visual ideas that sell.

Through the use of clear-coat technology, the imagePRESS C1+ color digital printing system can add watermarks to documents for added security. Using the clear toner, you can apply watermarks to highlight security, without taking away from the printed piece.

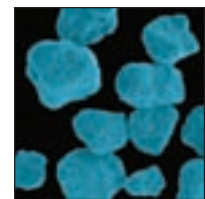


V TONER

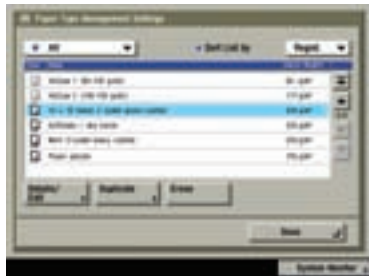
With V Toner, prints are more vivid and bright colors pop off the page, while gradient shadows and skin tones are progressive and smooth. Fine line details are crisp and clear because the V Toner has average 5.5 micron micro-dispersed wax-based construction coupled with oil-free fusing. The result is digital color prints that clearly communicate messages without the raised toner appearance that was recognizable as a copier print. Toner lays down smoothly and evenly, creating prints that look and feel consistent with offset work. Your clients will be pleased with the new concepts you've developed, and all your logos, designs, and campaigns can be properly executed to your standards. With confidence that you're saying what you want to say, you can create marketing materials for both internal proofing and client presentations.



Toner Cartridges



V Toner



Media Library

PAPER IS PART OF THE MESSAGE...

Key with the imagePRESS C1+ color digital printing system is the ability to provide unique paper management with the Media Library. Standard with pre-programmed descriptions and the ability to customize 200 more, the imagePRESS C1+ color digital printing system doesn't limit your choices for the tactile component of your message. Flexibility to handle a wide range of media from High Rag contents to premium gloss-coated and textured stocks is built into the core technologies, without being any more complicated for the end-user than choosing the name of the paper from a menu.

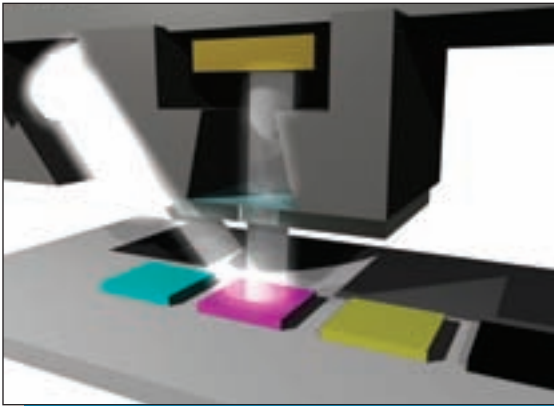
- **Prints on media sizes up to 13" x 19"**
- **Handles media weights from 17 lb. Bond up to 140 lb. Index**



INTEGRATION WITH DESKTOP COLOR MANAGEMENT

Your creative team can feel secure with the imagePRESS C1+ color digital printing system as it seamlessly integrates with all desktop color management solutions, supporting the Adobe® Creative Suite, QuarkXPress™, and other applications. Printer drivers are Macintosh® and Windows® compatible. You can print what you see on your monitor with the imagePRESS C1+ color digital printing system, removing the hassle of outputting multiple prints to check that you get what you want. Through open architecture and cross-platform color management capabilities, color predictability could never be easier.





Automatic Real-Time Calibration

COLOR CONSISTENCY AND COLOR STABILITY

Automatic Real-Time Calibration measures and maintains internal processes to ensure a concept through the proof stage and into final production. The stability and consistency of the imagePRESS C1+ color digital printing systems gives you confidence that your print will be what you intended, time and time again.



GLOSS OPTIMIZATION

The imagePRESS C1+ color digital printing system's groundbreaking Gloss Optimization enables the highest quality color digital output that your team demands. Through three key innovations—particle size, Media Library, and fuser controls—the image you create and the image that's printed match the gloss of the media you print it on. The imagePRESS C1+ color digital printing system delivers color that's visually similar to offset press printed pieces.

- The small toner particle size allows you to tightly manage your color saturation by providing a wider color gamut of hues that can be reproduced with maximum accuracy. The result is that your campaign branding and prototypes match the color profiles, and your message is effectively communicated to your creative team and your clients.
- The Media Library database lets you optimize the toner density page by page, depending on the type of stock you're using. You can program the name, weight, finish, and stock type you most frequently select into your own media database file. This provides maximum productivity and flexibility in printing the widest color gamut possible at all times. The toner will match the media it's printed on.
- Fuser controls in the imagePRESS C1+ color digital printing system utilize the media database to discretely control heat and pressure applied on a media-by-media basis, ensuring the highest quality prints, regardless of the type of paper used. The belt and roller assembly operate at a lower temperature and, therefore, minimize shifts in tone.



Three powerful print controllers to match your current and future needs to your budget

The imagePRESS C1+ color digital printing system offers controllers that are able to cope with a range of jobs—from entry-level graphics and office documents to intensive graphic and variable data files. Three exceptional performance controllers are available for any demanding environment.



imagePRESS Server Q2 V2

CANON imagePRESS SERVER Q2 V2

The most powerful controller in its class, the imagePRESS Server Q2 V2 offers the highest performance for large graphic-intensive files and color-critical jobs. Built on Microsoft® XPe Platform with an Intel® Pentium® Core™2 Duo E6400 processor, 1GB RAM, and a 160GB hard drive, the Canon imagePRESS Server Q2 V2 is powerful by design to meet growing color demands. Standard on the imagePRESS Server Q2 V2 is the Graphic Arts package which can deliver features such as auto trapping to ensure correct image-to-image registration. Whether using spot or substitute color matching, the imagePRESS Server Q2 V2 can allow accurate representation of brand identity colors. In creative environments utilizing Adobe or Quark desktop layout applications, the imagePRESS Server Q2 V2 utilizes a Spot workflow when creating designs that contain clear toner elements. This allows documents created in both Adobe and Quark to be sent directly to the controller for a seamless workflow.

CANON imagePRESS SERVER T1 V2

This mid-level controller offers many functions into a single, integrated high-performance system. It offers the highest quality color of any embedded solution with an advanced level tool set that includes Spot-On® Color Editor and auto trapping for high-end functionality. Built with Intel Celeron® M 1.5GHz and on a Linux platform, the imagePRESS Server T1 V2 delivers optimum performance for corporate, creative color, and light color production environments. The system also includes 256MB RAM and an 80GB hard drive and supports Adobe PostScript® 3™ and PCL. The imagePRESS Server T1 V2 also has the ability to create clear overlay templates from office applications while facilitating light graphic arts environments.



imagePRESS Server T1 V2

COLOR UFR II/PCL/PS KIT-P2

For non-graphic centric environments that still require high-quality printing and color tools, this controller handles print jobs from Microsoft Office and Acrobat® documents coupled with imageWARE Prepress Manager. It's also a perfect fit for those CRD environments that already have Canon imageRUNNER® and Color imageRUNNER systems with Canon controllers. It supports PCL 5c, PCL 6, and PostScript 3 emulation. Also standard is the Canon proprietary UFR II (Ultra Fast Rendering), which optimizes the power of the client PC and the UFR II/PCL/PS Kit-P2 Board. The Color UFR II/PCL/PS Kit-P2 also has the ability to print clear toner overlay templates through form compositions.

Specifications



MAIN UNIT

Technology:	Laser Electrostatic Transfer System
Developing System:	Dry Dual Component Developing System Auto Carrier Refresh
Acceptable Originals (MFP and Copier Model):	Sheets, Books, 3-Dimensional Objects (Up to 4.4 lb./2kg) 11" x 17" (Ledger)
Max. Original Size: Copy/Print Sizes	Executive, Statement-R, Letter-R, Letter, Legal, 11" x 17", 12" x 18", 13" x 19" (100mm x 148mm to 330mm x 483mm)
Cassette-Feeding:	Executive, Statement-R, Letter-R, Letter, Legal, 11" x 17", 12" x 18", 13" x 19" (100mm x 148mm to 330mm x 483mm)
Stack Bypass:	Executive, Statement-R, Letter-R, Letter, Legal, 11" x 17", 12" x 18", 13" x 19" (100mm x 148mm to 330mm x 483mm)
Magnification	25%, 50%, 61%, 70%, 81%, 86%, 115%, 122%, 141%, 200%, 400%
Preset Reduction:	25% - 400% (Between 25% and 400%, in 1% Increments)
Preset Enlargement:	25% - 400% (Between 25% and 400%, in 1% Increments)
Zoom Mode:	25% - 400% (Between 25% and 400%, in 1% Increments)
Copy/Print Speeds (Letter):	Up to 14 ppm (Color)/Up to 60 ppm (B/W and Clear Only)
First-Copy Time:	7.6 Seconds (B/W), 14.1 Seconds (Color)
Warm-Up Time:	11 Minutes 40 Seconds Max. After Powering On (68°F/20°C)
Image Server Memory: Mail Box Features	11 Minutes 40 Seconds From Sleep Mode 80GB HDD + 1.5GB RAM
Max. Mail Boxes Supported:	100 User Inboxes
Max. Stored Documents:	1,500 per Inbox
Max. Stored Pages:	3,000 Pages with Full Color 6,000 Pages with B/W
Resolution	600 x 600 dpi
Scanning:	1200 x 1200 dpi (Continuous Tone)
Printing:	256-Level Grayscale
Half-tone:	Automatic or Manual (9 Levels)
Copy Exposure:	Automatic or Manual (9 Levels)
Paper-Feeding Standard:	550 Sheets Paper Drawers x 4 (2,200 Sheets: 20 lb. Bond/80gsm) Stack Bypass (100 Sheets: 20 lb. Bond) Paper Deck-AA1/AB1 (3,500 Sheets: 20 lb. Bond)
Optional:	17 lb. Bond to 110 lb. Index (64gsm - 209gsm) and Transparency 17 lb. Bond to 140 lb. Index (64gsm - 256gsm) and Transparency Standard Automatic Trayless Duplexing 1 to 999 120V AC, 60Hz (From Main Engine) 15A, 20A (Total Two Plugs for Main Unit)
Acceptable Paper Weights Cassettes:	41-3/8" x 33-5/8" x 35-5/8" (1042mm x 855mm x 898mm) 58-1/8" x 52-3/4" x 35-3/8" (1476mm x 1339mm x 898mm) (1476mm x 1339mm x 898mm) Approximately 694 lb. (315kg)
Stack Bypass:	
Duplexing:	
Multiple Copies:	
Power Source:	
Power Plugs:	
Dimensions (H x W x D) (Printer/Reader, w/o UI):	
(Printer/Reader, with UI):	
Weight (Printer/Reader):	

ACCESSORIES

Color Image Reader-H1

Image Sensor:	CCD
Originals:	Sheets, Books, 3-Dimensional Objects Up to 4.4 lb. (2kg)
Document Size:	Statement to 11" x 17" (139.7mm x 139.7mm to 297mm x 432mm)
Light Source:	Xenon Tube
Resolution:	600 x 600 dpi, 256 Gradations
Productivity:	Up to 80 ipm (300 dpi), Up to 50 ipm (600 dpi)
Power Source:	From Main Engine
Dimensions (H x W x D) (Excluding Document Feeder):	4-1/8" x 28-7/8" x 23-1/2" (105mm x 732mm x 595mm)
Weight (Excluding Document Feeder):	Approximately 38.5 lb. (17.5kg)

DADF (Duplexing Automatic Document Feeder)-R1*

Tray Capacity:	100 Sheets
Scanning Speed:	Up to 80 Sheets per Minute (Letter)
Acceptable Original Sizes:	Statement to 11" x 17"
Acceptable Paper Weight:	13 lb. Bond to 80 lb. Cover (50gsm to 216gsm)
Dimensions (H x W x D):	5-5/8" x 25-1/2" x 22-3/8" (143mm x 646mm x 569.5mm) (Excl. Document Output Tray)
Weight (Excluding Output Tray):	Approximately 47.3 lb. (21.5kg)

Side Paper Deck-AA1**

Paper Capacity:	3,500 Sheets (20 lb. Bond)
Paper Size:	Letter, Letter-R, Legal, 11" x 17", 12" x 18", 13" x 19"
Paper Weight	
Non-Coated Media:	17 lb. Bond to 140 lb. Index (64gsm to 256gsm)
Coated Media:	28 lb. Bond to 140 lb. Index (106gsm to 256gsm)
Dimensions (H x W x D):	22-1/2" x 23-5/8" x 24-1/2" (570mm x 601mm x 621mm)
Weight:	Approximately 112.4 lb. (51kg)

Side Paper Deck-AB1

Paper Capacity:	3,500 Sheets (20 lb. Bond)
Paper Size:	Letter
Paper Weight:	17 lb. Bond to 110 lb. Index
Dimensions (H x W x D):	22-5/8" x 12-7/8" x 23" (574mm x 326mm x 583mm)
Weight:	Approximately 68.3 lb. (31kg)

Finisher-AA1 and Saddle Finisher-AA2

Number of Trays:	3 Trays
Tray Capacity	
Non-Collate Mode	
Tray A:	250 Sheets (Letter, Statement-R, Executive) 125 Sheets (Legal, Letter-R, 11" x 17", 12" x 18", 13" x 19")
Tray B:	1,300 Sheets (Letter, Statement-R, Executive) 650 Sheets (Legal, Letter-R, 11" x 17", 12" x 18", 13" x 19")
Tray C:	2,450 Sheets (Letter, Executive) 1,700 Sheets (Statement-R) 650 Sheets (Legal, Letter-R, 11" x 17", 12" x 18", 13" x 19")
Collate and Group Mode***	
Tray B:	1,300 Sheets (Letter, Executive) 650 Sheets (Legal, Letter-R, 11" x 17", 12" x 18", 13" x 19")
Tray C:	1,700 Sheets (Statement-R) 650 Sheets (Legal, Letter-R, 11" x 17", 12" x 18", 13" x 19")
Staple Mode***	
Tray B/C:	1,300 Sheets/100 Sets (Letter, Executive) 650 Sheets/50 Sets (Legal, Letter-R, 11" x 17")
Max. Stapling Capacity Corner/Double:	50 Sheets (Letter, Executive) 30 Sheets (Letter-R, Legal, 11" x 17")
Saddle-Stitching (Saddle Finisher-AA2 Only)†	Letter-R, Legal, 11" x 17", 12" x 18" 1 to 5 Sheets/25 Sets 6 to 10 Sheets/15 Sets 11 to 15 Sheets/10 Sets
Acceptable Paper Sizes: Capacity/Tray:	15 Sheets V-Fold 43-3/8" x 25-1/2" x 25-7/8" (1102mm x 646mm x 656mm)
Max. Stapling Capacity/Set: Folding:	15 Sheets V-Fold
Dimensions (H x W x D):	43-3/8" x 25-1/2" x 25-7/8" (1102mm x 646mm x 656mm)
Weight	
Finisher-AA1:	Approximately 106.9 lb. (48.5kg)
Saddle Finisher-AA2:	Approximately 158 lb. (71.5kg)
Attachable Accessories:	Puncher Unit-M1

Puncher Unit-M1

(Option for Finisher-AA1/Saddle Finisher-AA2)***	
Max. Paper Weight:	17 lb. Bond to 140 lb. Index (64gsm to 256gsm, 106gsm to 256gsm for Coated Media)
Paper Sizes	
2-Hole:	Letter-R, Legal, Executive
3-Hole:	Letter, 11" x 17"
Punch Method:	Sequential Processing System (One Sheet at a Time)
Punch Dust Stock:	3,000 Sheets
Power Source:	From Main Unit
Dimensions (H x W x D):	32-3/4" x 4-1/4" x 24-1/4" (833mm x 107mm x 614.8mm)
Weight:	Approximately 15.4 lb. (7kg)

Color UFR II/PCL/PS Printer Kit-P2

Processor:	Canon Dual Custom Processors (Shared)
RAM:	1.5GB (Shared)
Hard Disk:	80GB (Shared)
PDL Support:	UFR II, PCL 5e, PostScript 3 Emulation
Std. Interface Connections:	10/100 Base-T (RJ-45), USB (2.0)
Network OS:	Windows 2000/XP/Windows Vista®/Windows Server 2003/2008/Mac OS X/Citrix Metaframe

Color Universal Send Kit-G1

Color Mode:	Auto Color Select (Full Color/Grayscale) Auto Color, Select (Full Color/B/W), Full Color, Grayscale, B/W
Address Book Capacity:	Max. 1,800 Destinations (Includes 200 One-Touch Buttons), Max. 5 LDAP Servers
Sending Methods:	E-Mail, I-Fax, SMB, File Server, (FTP, IPX, WebDAV), User Inbox
Communication Protocol File:	FTP (TCP/IP), SMB (TCP/IP), NCP (IPX), WebDAV
E-Mail/I-Fax:	SMTP, POP3, I-FAX (Simple, Full)
Data Format File, E-mail:	TIFF, JPEG, PDF, PDF (Compact)†† PDF (Trace & Smooth)††, PDF (OCR)††, Encrypted PDF, Digital Signature PDF (Device, User)††
I-Fax:	B/W: TIFF (MH, MR, MMR) Color: TIFF (Profile-C)

Additional Accessories

- Universal Send PDF Advanced Feature Set-A1***
- Universal Send PDF Security Feature Set-A1***
- Digital User Signature PDF Kit-A1***
- Web Access Software-E1*
- Secure Watermark-A1
- Encrypted Secure Print Software-C1*
- HDD Data Encryption Kit-B1
- Voice Guidance Kit-B1*
- Remote Operator Software Kit-A2
- HDD Data Erase Kit-A1**
- Platen Cover Type K***
- Stack Bypass Tray-B1
- Barcode Printing Kit-A1
- Card Reader Attachment-E1
- Voice Guidance Kit-B1
- Voice Guidance Attachment-B1
- Staple Cartridge-J1
- Staple Cartridge-D2
- Document Tray-J1
- Card Reader-C1*
- Cassette-AE1
- ADF Access Handle-A1**
- imagePRESS Server Q2 V2***
- imagePRESS Server T1 V2***
- Workflow Composer-B4
- Access Management System Kit-A2
- Braille Label Kit-E1
- imageWARE Suite

- * Power Supply Unit-S1 (for imagePRESS C1+) is included.
- ** Requires power outlet independently.
- *** Up to 11" x 17"
- † Up to 12" x 18"
- †† When configured on the imagePRESS C1+, requires Universal Send PDF Advanced Feature Set-A1.
- ††† When configured on the imagePRESS C1+, requires Universal Send PDF Security Feature Set-A1.
- †††† When configured on the imagePRESS C1+, requires Digital User Signature Kit-A1.
- ††††† Requires the Color Universal Send Kit-G1.
- Cannot be installed with the imagePRESS Server Q2/T1 V2.
- Voice Guidance Attachment-B1 is required for installation.
- HDD Data Encryption Kit-B1 is required for installation.
- Cannot be installed with the DADF-R1.
- Requires Card Reader Attachment-E1.
- Requires DADF-R1.
- Check with your local Authorized Canon Dealer for availability.

Canon
image*ANYWARE*

1-800-OK-CANON
www.usa.canon.com

Canon U.S.A., Inc.
One Canon Plaza
Lake Success, NY 11042

Adobe, PostScript, and Acrobat are registered trademarks or trademarks of Adobe Systems Incorporated in the United States and/or other countries. QuarkXPress is a trademark of Quark, Inc. and all applicable affiliated companies. Reg. U.S. Pat. and Tm. Off. and in many other countries. Spot-on is a registered trademark of Electronics for Imaging, Inc. in the U.S. Patent and Trademark Office and/or certain other foreign jurisdictions. Intel, Celeron, and Pentium are trademarks or registered trademarks of Intel Corporation or its subsidiaries in the United States and/or other countries. Microsoft, Windows, and Windows Vista are registered trademarks of Microsoft Corporation in the United States and/or other countries. Macintosh is a registered trademark of Apple Inc. PANTONE is a registered trademark of Pantone, Inc. CANON, IMAGEPRESS, and IMAGERUNNER are registered trademarks of Canon Inc. in the United States and may also be registered trademarks or trademarks in other countries. IMAGEWARE is a registered trademark of Canon U.S.A., Inc. in the United States and is a trademark of Canon Inc. in certain other countries. IMAGEANYWARE is a trademark of Canon. All other referenced product names and marks are trademarks of their respective owners and are hereby acknowledged. Specifications and availability subject to change without notice. ©2009 Canon U.S.A., Inc. All rights reserved.

Federal Law prohibits copying of certain documents. Violators may be subject to penalties. We suggest that you check with your own legal counsel. Canon U.S.A., Inc. and Canon Canada, Inc. intend to cooperate with Law Enforcement Agencies in connection with claims of unauthorized copying.

0134W686
0509R-iPC1+-7M-L

